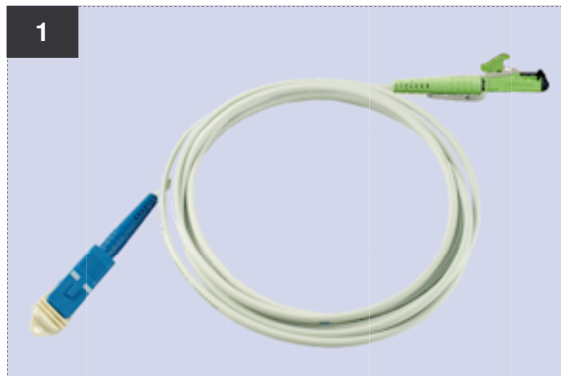


Montageanleitung OE Standard

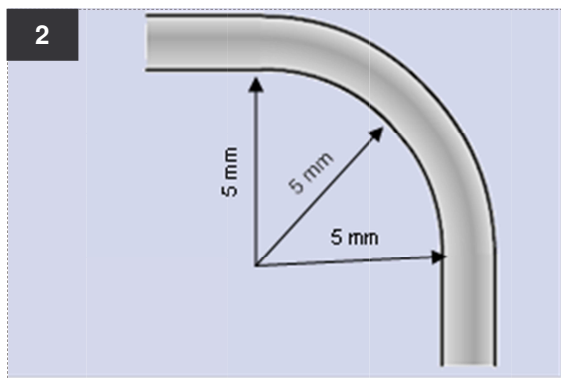


Lieferform:

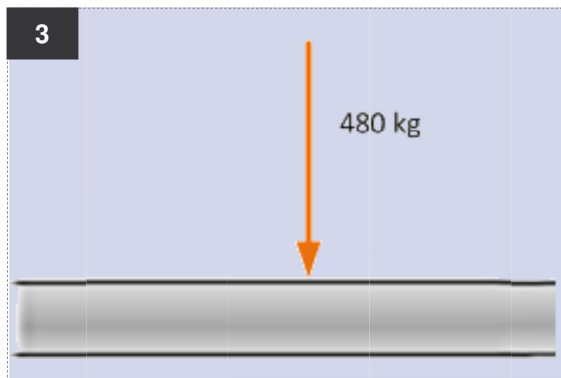
Verbindungskabel

- Seite Dose/BEPOTO grüner Stecker
F-3000 LC APC
- Seite Router blauer Stecker
SC PC

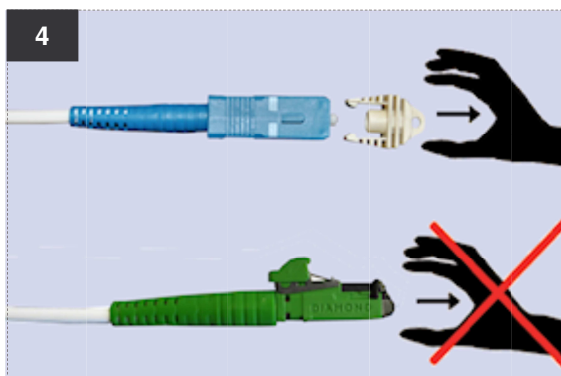
Längen 10, 15, 20, 25 Meter bei Diamond erhältlich.



Beim Verlegen ist darauf zu achten, dass der Radius von 5 mm nicht unterschritten wird. Dieser Radius darf auch während des Betriebes nicht unterschritten werden. Das Kabel nicht knicken.



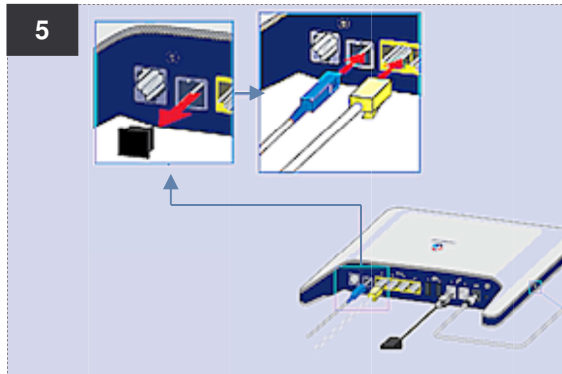
Es darf max. 480 kg Druck auf das Kabel ausgeübt werden.



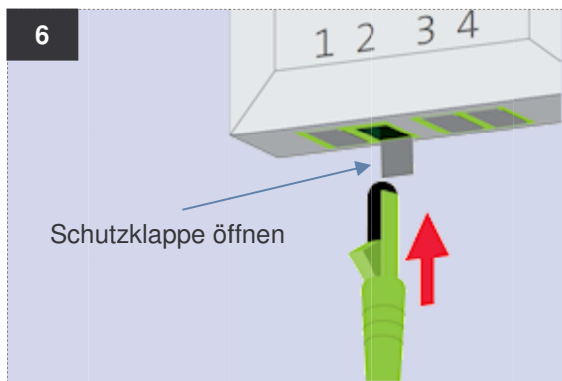
Schutzkappe nur beim blauen SC Stecker und erst beim Einstecken entfernen

Offenes Ende am Stecker nicht berühren.

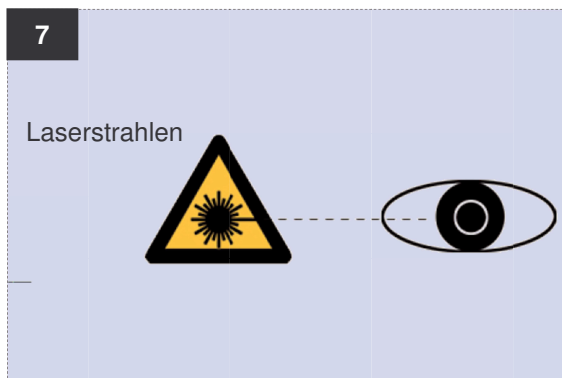
Montageanleitung OE Standard



Anschluss am Router:
Entfernen Sie die Schutzkappe am Router und stecken Sie den blauen Stecker ein.



Anschluss an der Dose/BEPOTO:
Schutzklappe öffnen und den grünen Stecker in die Glasfasersteckdose einstecken.



WARNUNG

Nicht direkt in den Ausgang des Steckers oder in die Dose an der Wand blicken.



Sicherheitshinweis

Arbeiten an Niederspannungsanlagen (230-400V) in Bezug der Glasfasererschliessung dürfen nur durch Installationsfirmen mit einer allgemeinen Installationsbewilligung nach Art. 9 NIV oder Personen mit der Bewilligung für Arbeiten an besonderen Anlagen nach Art. 14 NIV ausgeführt werden.

Instructions de montage OE standard

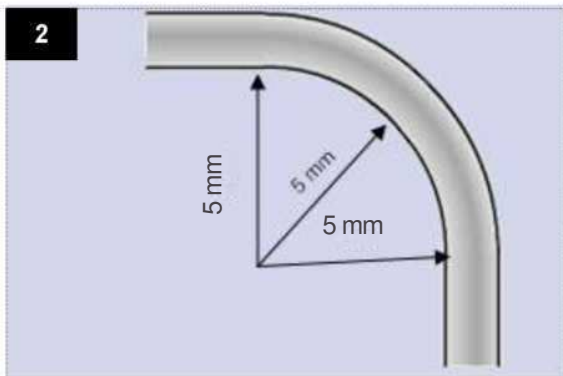


Conditionnement:

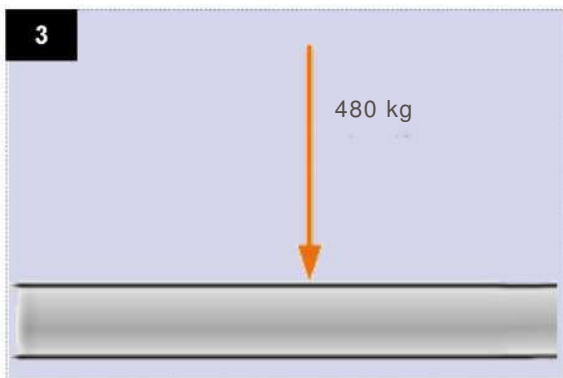
Câble de connexion

- Côté prise/BEPOTO connecteur vert F-3000 LC APC
- Côté routeur connecteur bleu SC PC

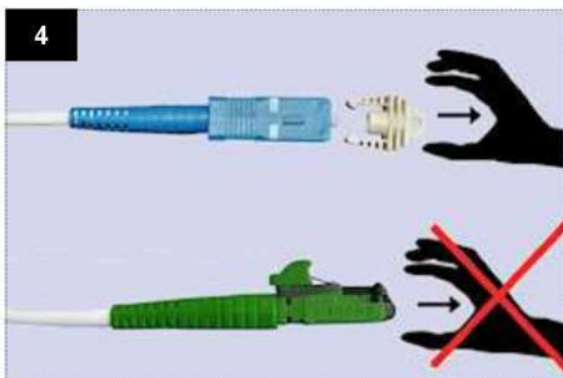
Disponible chez Diamond en longueurs 10, 15, 20, 25.



Lors de la pose, veiller à ce que le rayon de courbure ne soit pas inférieur à 5 mm. Ce rayon ne doit pas non plus être inférieur à cette valeur pendant le fonctionnement. Ne pas plier le câble.



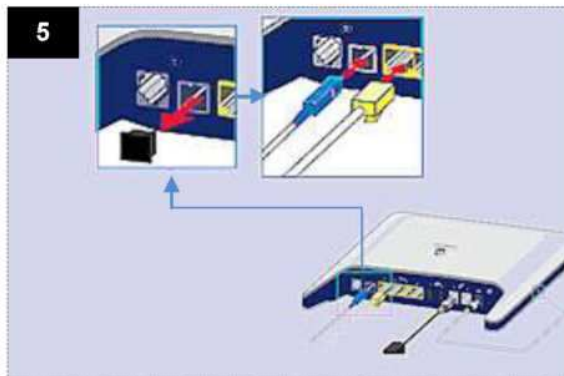
La pression exercée sur le câble ne doit pas dépasser une charge maximale de 480 kg.



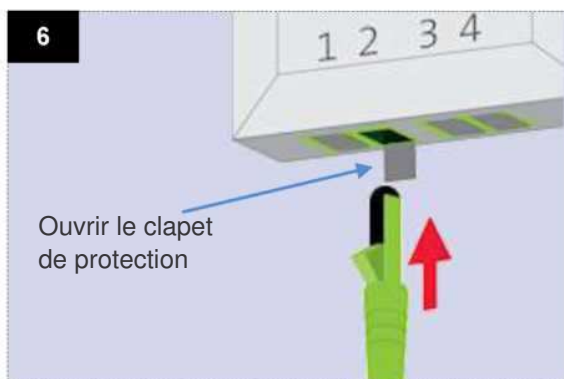
Retirer le capuchon de protection du connecteur SC bleu et seulement au moment du branchement.

Ne pas toucher l'extrémité ouverte du connecteur.

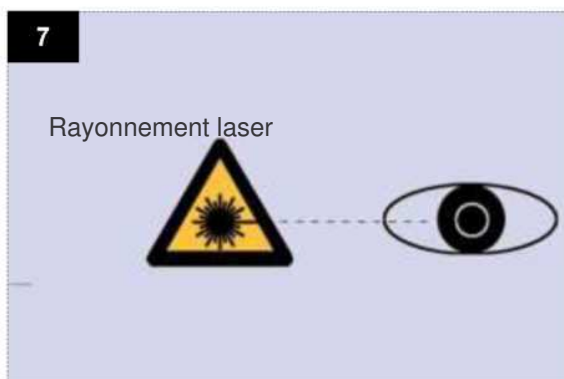
Instructions de montage OE standard



Connexion au routeur:
retirer le capuchon de protection sur le routeur et brancher le connecteur bleu.



Connexion à la prise/BEPOTO: ouvrir le clapet de protection sur la prise et brancher le connecteur vert à la prise fibre optique.



AVERTISSEMENT

Ne pas regarder directement la sortie du connecteur ou la prise au mur.



Consignes de sécurité

Les travaux sur des installations à basse tension (230-400V) dans le cadre du déploiement de la fibre optique doivent être exécutés par des entreprises d'installation dûment autorisées conformément à l'art. 9 de l'OIBT ou des personnes habilitées à effectuer des travaux sur des installations spéciales conformément à l'art. 14 de l'OIBT.

Assembly instructions OE standard

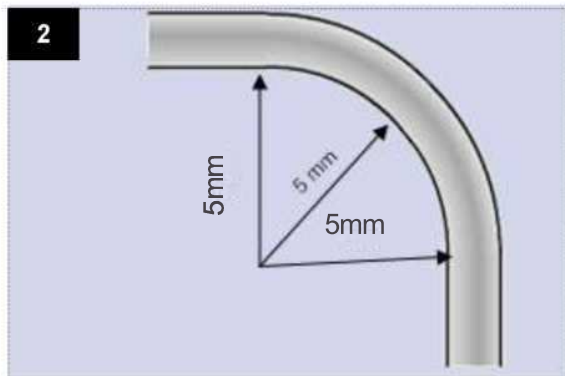


Delivery form:

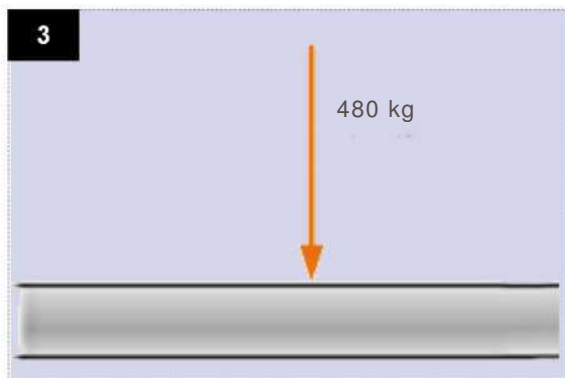
Connecting cable

- Socket/BEPOTO end, green connector
F-3000 LC APC
- Router end, blue connector
SC PC

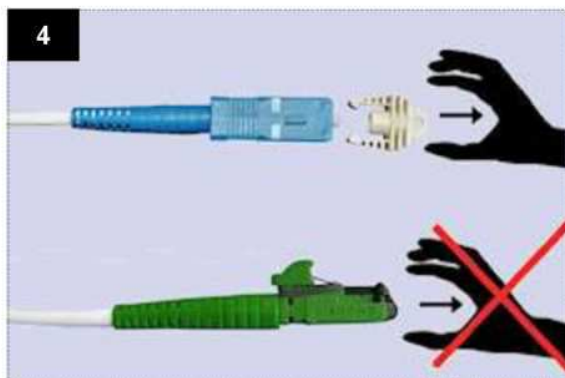
Lengths 10, 15, 20, 25 available from
Diamond SA.



When laying the cable, be sure you do not
go below a radius of 5mm. This minimum
radius must also be adhered to during
operation.
Do not bend the cable.



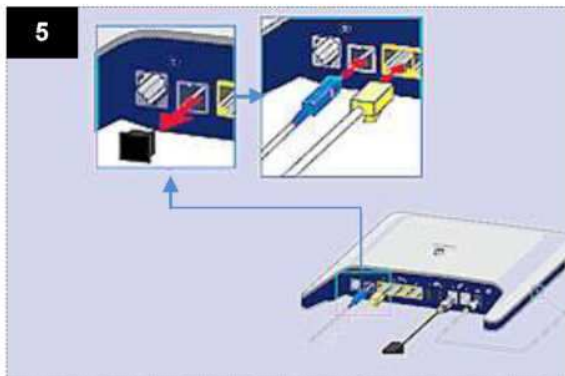
A maximum pressure of 480kg may be
exerted on the cable.



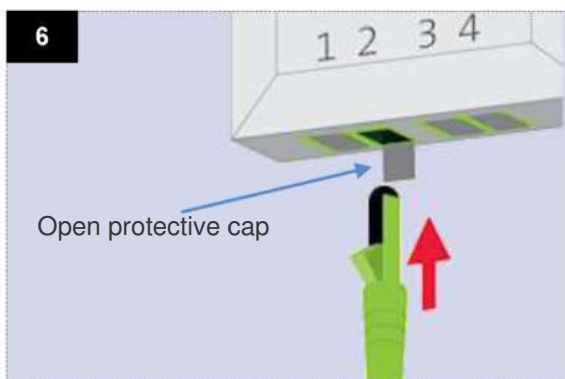
Remove only the protective cap from the
blue SC connector. Do not do this until you
need to plug it in.

Do not touch the exposed end of the
connector.

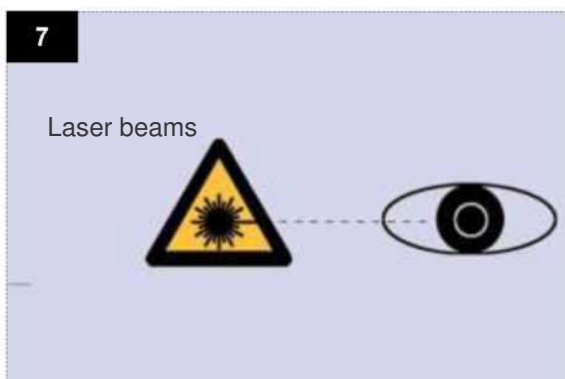
Assembly instructions OE standard



Connection to router:
Remove the protective cap from the router and connect it into the blue plug.



Connection to socket/BEPOTO: Remove the protective cap and put the green connector into the fibre optic socket.



WARNING
Do not look directly into the end of the connector or into the wall socket.



Security information
Work on low voltage facilities (230-400V) for the purpose of connecting fibre optic cables may only be performed by installation firms with general installation authorization in accordance with Art. 9 of the Low-Voltage Installation Ordinance (Niederspannungs-Installationsverordnung, NIV) or by people with special authorization to work on such facilities in accordance with Art. 14 NIV.

Istruzioni di montaggio OE Standard



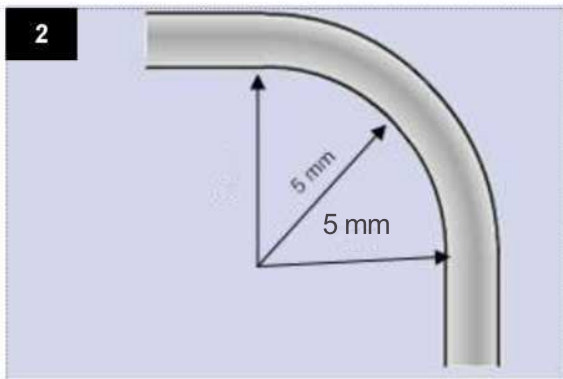
Configurazione di consegna:

Bretella di collegamento:

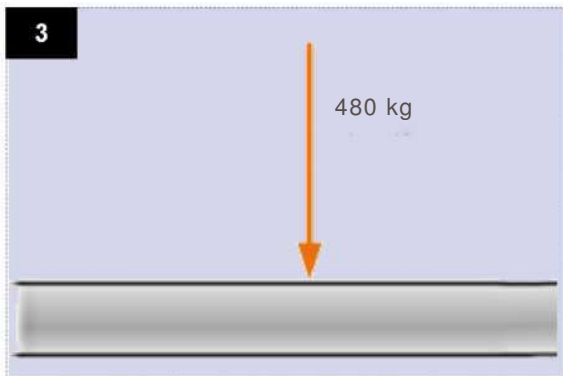
- Lato scatola/BEPOTO connettore verde
F-3000 LC APC

- Lato router connettore blu SC PC

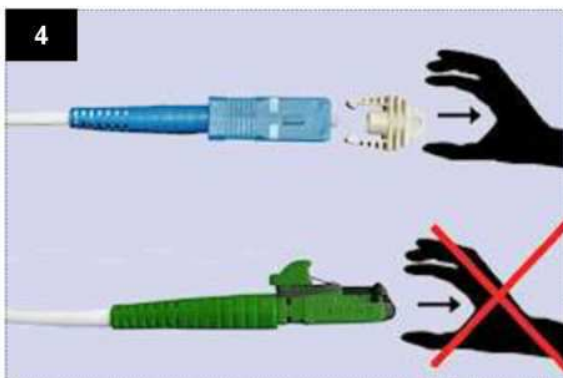
Le lunghezze standard sono: 10, 15, 20,
25m.



Durante l'installazione del cavo, tenere in considerazione che il raggio di curvatura non deve essere inferiore a 5mm. Questo per garantire il corretto funzionamento della fibra



Il cavo resiste fino ad una pressione massima di 480 kg.

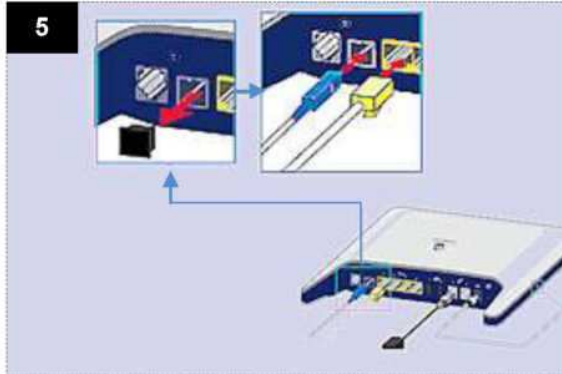


Rimuovere il cappuccio di protezione del connettore blu (SC) unicamente al momento della connessione.

Non toccare mai l'estremità scoperta del connettore.

Non togliere il cappuccio del connettore verde (F-3000™) in quanto si apre automaticamente al momento dell'inserimento.

Istruzioni di montaggio OE Standard

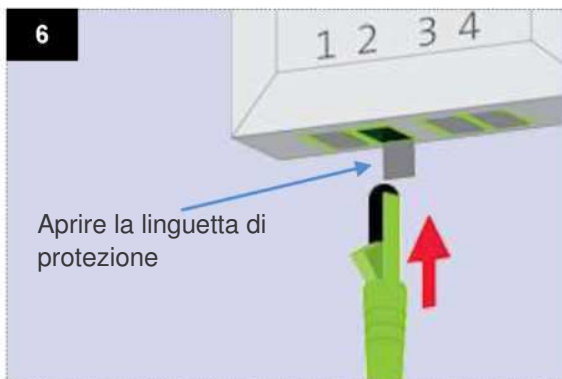


Tramite il cavo di collegamento, che viene fornito con il router, è possibile realizzare il collegamento presa ottica/router.

Allacciamento al router:

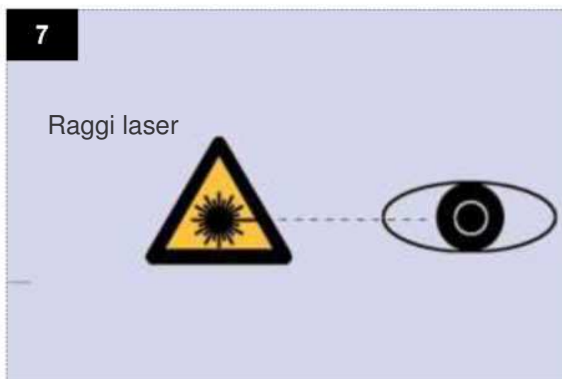
Rimuovere il cappuccio di protezione della presa ottica sul router.

Rimuovere il cappuccio di protezione del connettore blu seguendo le istruzioni (allegate al cavo di collegamento) e di seguito inserirlo.



Allacciamento alla presa ottica:

Abbassare la linguetta di protezione della presa ottica e inserire il connettore verde.



AVVERTENZA

Mai guardare direttamente uscita del connettore (frontalmente) o l'uscita della presa ottica quando la linguetta è abbassata.



Avvertenza sulla sicurezza

I lavori sugli impianti di bassa tensione (230-400V) che riguardano l'allacciamento della fibra ottica, possono essere eseguiti unicamente da ditte in possesso dell'autorizzazione all'installazione secondo l'art. 9 OIBT o da persone in possesso dell'autorizzazione per lavori su impianti speciali secondo l'art. 14 OIBT.